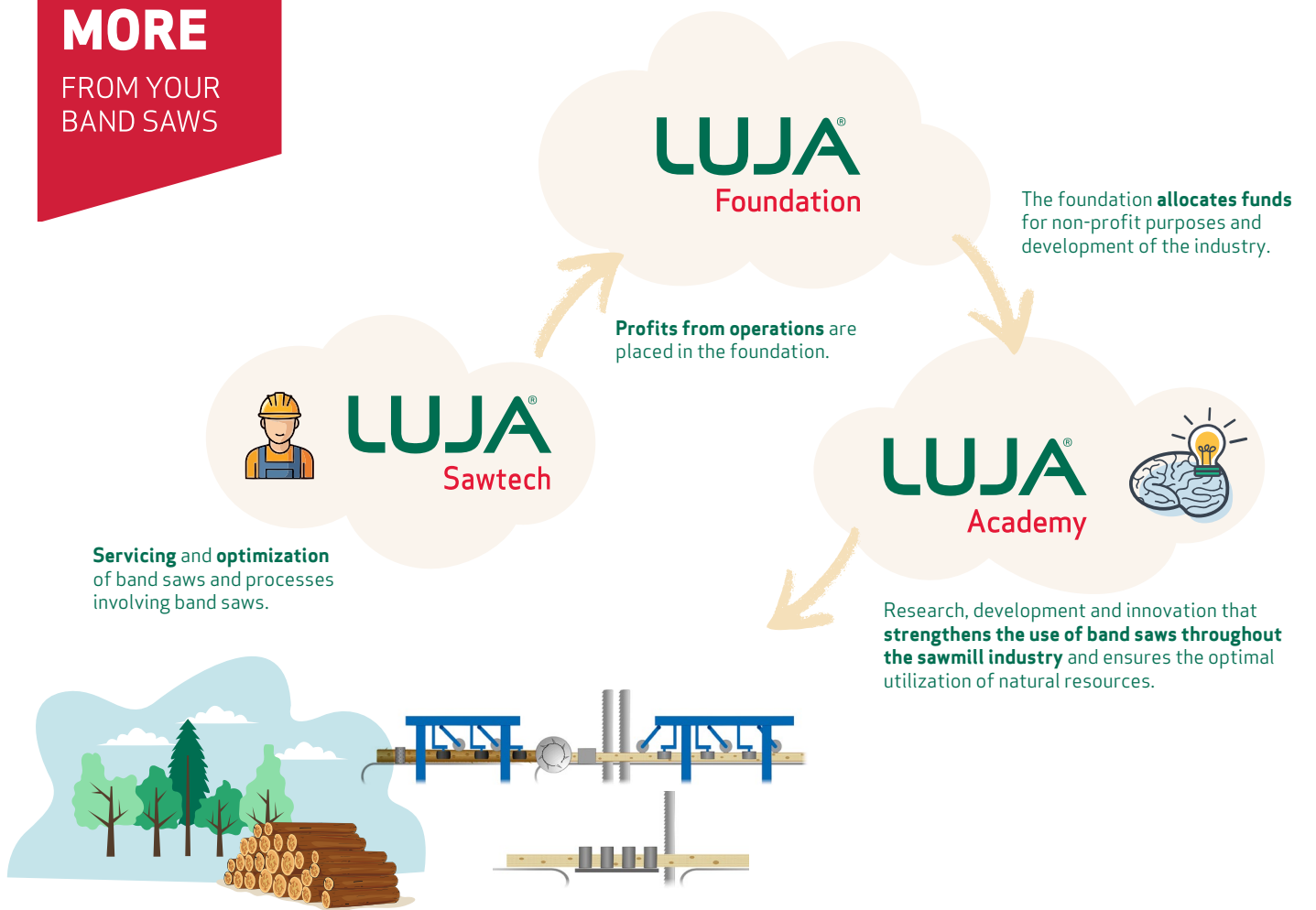


EXPECT MORE

FROM YOUR BAND SAWS



Luja Sawtech continues to offer a broad product range, selected to support high productivity and consistent quality in sawmills and resaw mills:

- Luja Blade Guide System™
- CNC controlled wheel grinding and balancing
- Alignment
- Luja Bio-Oil
- Blade lubrication
- Wear parts and spare parts
- Construction
- Feeding systems
- HYRO® bandsaw guides

WE REINVEST IN THE FUTURE OF THE INDUSTRY

Research, knowledge sharing and development

For more than 20 years, LUJA Sawtech has been recognized for its specialized work in optimizing band saws throughout Northern Europe.

In 2026, the ownership of LUJA Sawtech will be transferred to the LUJA Foundation, which, together with the new R&D company LUJA Academy, will form a unique circular community, where all profits from the operation of LUJA Sawtech and LUJA Academy will be returned to the industry through the LUJA Foundation. By cooperating with LUJA Sawtech, you are simultaneously supporting the development of the use of band saws and the utilization of natural resources.

Luja Foundation is an independent foundation without private ownership that can access profits from the foundation's activities. The profits from the foundation's activities are instead used for charitable purposes and research, development and innovation with the aim of strengthening the use of band saws throughout the sawmill industry.

We are ready to invest in the future of the industry - do you want to join us?

Best regards,
Søren Luja Hansen

Read more at www.luja.co.uk