

**EXPECT
MORE**

FROM YOUR
BAND SAWS

New times for Luja – with the same vision and renewed focus

For more than 20 years, Luja has had one clear objective: to optimise the use of band saws with a focus on higher yield, lower energy consumption and more stable operations. We have achieved this through consultancy, development and close collaboration with those of you who work with the saws in daily practice.

Now we are taking the next step with a new organisational structure. To future-proof the company and the knowledge we have built over two decades, we have decided to change the ownership structure by establishing Luja Foundation, an industrial foundation that will own and operate the entire Luja structure going forward.

LUJA[®] Foundation

Luja Fonden aims to promote the development and use of band saw technology through knowledge sharing, technical innovation and industry-focused development initiatives.

Read more about the foundation at www.lujafoundation.com

LUJA[®] Academy

Luja Academy is a new knowledge and development centre under the foundation. Here, we will gather knowledge, document and conduct testing. We collaborate with research environments, foundations and industry partners.

The objective is to:

- Optimise operations, precision and energy efficiency
- Develop new components and machine set-ups
- Train and inspire the next generation of saw specialists

Read more at www.lujaacademy.com

LUJA[®] Sawtech

The operating company continues as before and is being strengthened. We are rebuilding a dedicated service organisation and will continue to offer our established products:

- Oils and consumables
- Luja Blade Guide System
- Technical support and consultancy

Read more at www.luja.co.uk

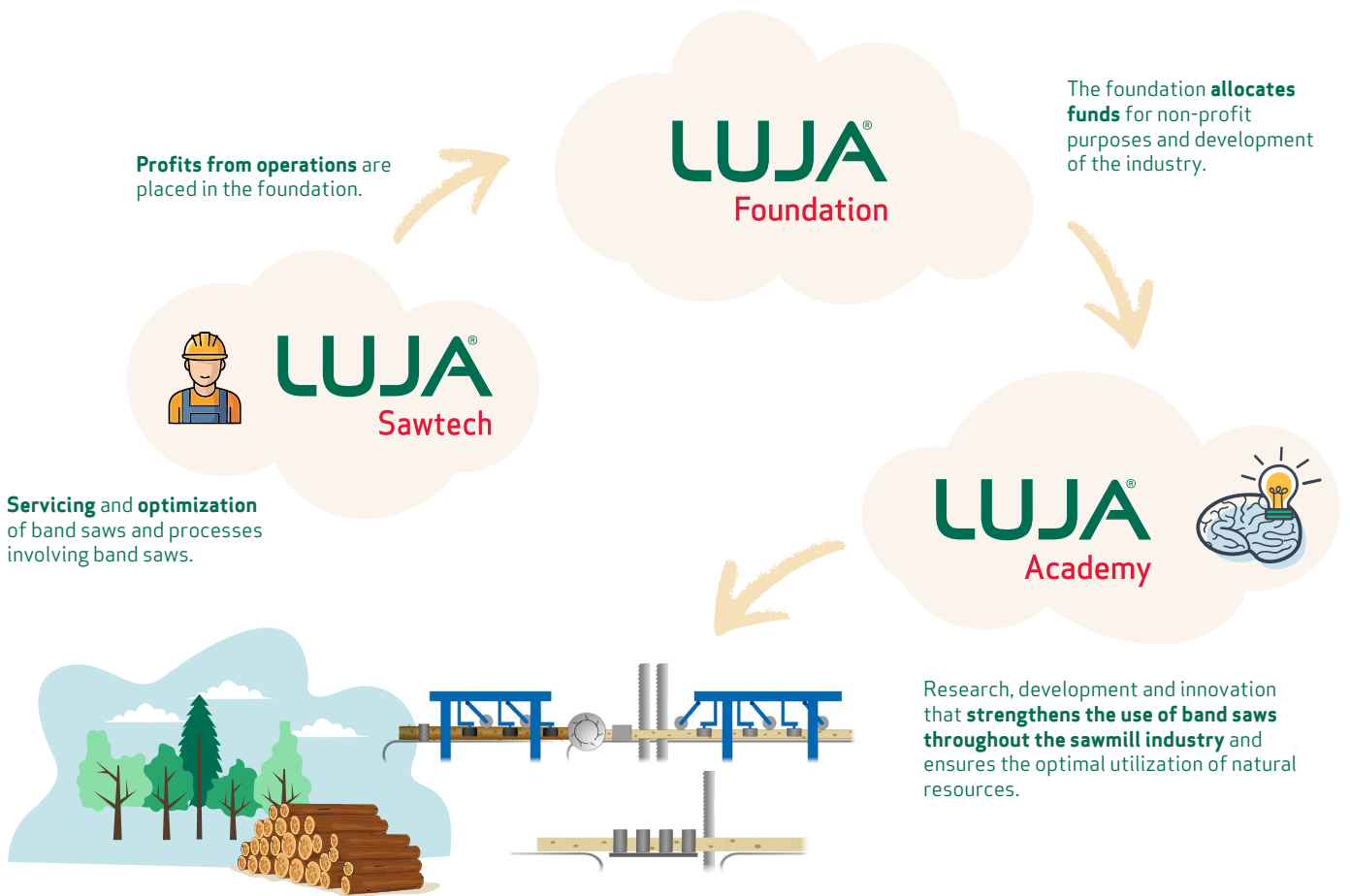
A model with purpose

When you work with Luja Sawtech A/S, you also support the development of future band saw technology. Profits from commercial activities in Luja A/S are reinvested in development and innovation within Luja Academy.

This means you are not only investing in your own production, but also in the future of the entire industry.

As a customer, you therefore contribute to creating long-term value in environmental performance, raw material utilisation and technological innovation – while maintaining a strong focus on ESG within the industry.





What does this mean for you?

- You will continue to receive the same products and solutions you know
- You will experience the same professional commitment
- We are opening up for collaboration on testing, development and innovation

We recognise that delivery performance has been challenged in recent years, and we understand if some have lost patience. We take this very seriously. We are now strengthening the organisation and working purposefully to regain full operational capacity. Within the next six months, we expect to have a clear plan in place for a new service organisation.

Our ambition is that this new structure will create a solid foundation for improved raw material utilisation and value creation with band saw technology in the future.

Do you have questions about the new structure?

Or would you like to learn more about becoming a test site, sparring partner or development partner?

Please do not hesitate to contact us.

We are still here – with the same professional expertise and a stronger foundation than ever.

Thank you for your trust and for being part of the journey.

Kind regards,

Gitte Glibstrup
Head of Communications

Tlf. +45 2637 1611
mail@lujafoundation.dk

Luja Foundation · Luja Academy · Luja Sawtech