

Operations and development:

Luja restructures – and launches a new academy for band saw technology

After having been active in the market for almost 25 years, Luja marks a decisive shift in the company's history. The danish band saw specialist is now reorganised under a industrial foundation, Luja Foundation, and at the same time launches Luja Academy, a new knowledge and development centre for saw technology.

The restructuring follows a traffic accident that for several years has limited previous owner Søren Luja Hansen's ability to participate in daily operations. The new model secures the company's future and professional foundation by linking research, knowledge and practical experience.

Three entities – one mission

The new structure brings Luja together in three pillars with a shared objective: to develop and advance band saw technology.

The ambitions are clear:

"Our mantra has always been *'Expect more'*, and that still applies. We have chosen a model where our knowledge can live on and help lift the entire industry," says Søren Luja Hansen.

The Luja Foundation is currently working on 2 high-potential development projects that point in the direction of:

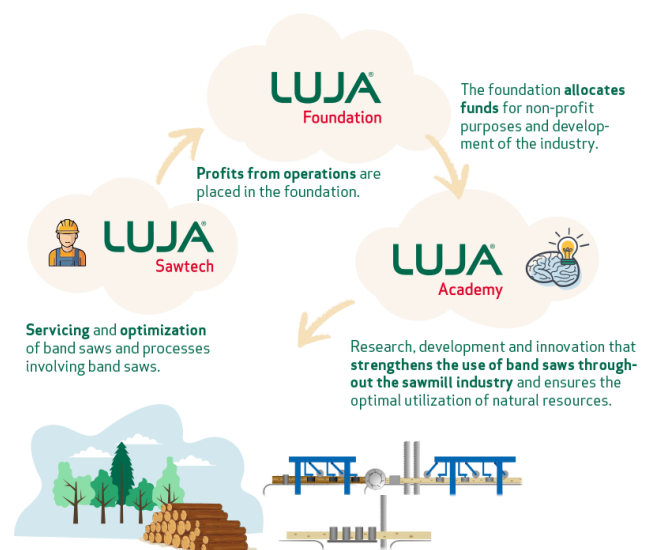
- More than 30% reduction in energy consumption compared with established technology
- Finer and more uniform surface quality across different wood densities
- Durable solutions for thinner kerf widths, even on older machines.

Luja Foundation

The industrial foundation serves as the overarching ownership structure and ensures that operating profits are reinvested in development and research. The foundation's purpose is to strengthen innovation and knowledge sharing within saw technology for the benefit of the entire industry.

Luja Academy

A newly established knowledge and development centre focused on research, testing and documentation of band saw technology.



Luja Sawtech A/S

The operating company continues as before and is being strengthened. Luja is rebuilding a dedicated service organisation and continues to supply its established products, including oils, consumables and the Luja Blade Guide System.

Innovation, ESG and documented impact

When customers purchase from Luja Sawtech A/S, operating profits are channelled into research and development activities within Luja Academy. This creates a direct link between operations and innovation.

“We believe that practical innovation is created in collaboration with the people who work at the machines every day. That is why we are ready to invite test partners, sparring partners and customers into a closer development community,” says Søren Luja Hansen.

Contact and dialogue

Luja Sawtech emphasises that all existing customers will continue to receive the products and solutions they know today – while future collaboration may increasingly evolve into partnerships focused on testing, technology and next-generation saw technology.

Press contact:

Gitte Glibstrup

Tel. +45 2637 1611

mail@lujafoundation.dk

Facts – the new Luja:

- Established in 2002, restructured in 2026
- New structure: Luja Foundation (ownership), Luja Academy (development), Luja Sawtech A/S (operations)
- Focus: Band saw technology, energy reduction, precision and technological development
- Read more at: www.lujafoundation.com · www.lujaacademy.com · www.luja.co.uk